

The Secret to Successful Workplace Transformation

Lenovo

With the new-gen workforce here, workplaces are changing - and fast!

Organisations need to make smart investments to equip these digital natives with the right tools that complement their work styles.



Employees who believe their workplace effectively uses mobile technology are more **creative**, **satisfied**, and **productive** at work.¹

Next-Gen Endpoint Devices:

The change agents that are shaping the future of workplaces.

75%

of workers believe that they don't have access to the latest efficiency-boosting technology.²

3 Ways Endpoint Devices Enable Modern Workplace Needs



1. Reinforcing Cloud Security

Endpoint devices are decisive for every organisation. They are the gateways to your workplace network. With the cloud ecosystem becoming the norm and work becoming increasingly mobile, endpoints need to be more sophisticated and secure.

40%

of SMBs³ cite security and privacy as top concerns with cloud service.³



Non-intrusive security that doesn't get in the way of work.



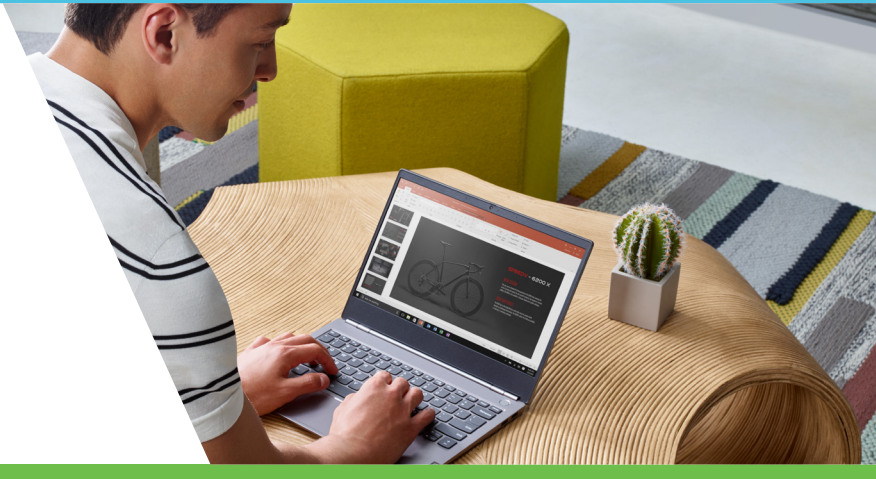
Enhanced performance for higher efficiency.



Uninterrupted connectivity for easy data accessibility.

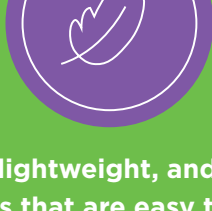
60%

of SMB business leaders state that the right technology "improves employee productivity"⁵

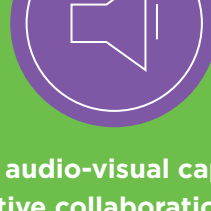


2. Enhancing Productivity

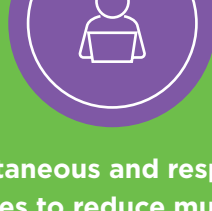
Employees rely on their devices to operate, communicate, and collaborate. The first step to improving productivity is to equip your employees with the right endpoint devices relevant to their job roles.



Sleek, lightweight, and sturdy devices that are easy to carry while working on the go.



Superior audio-visual capabilities for effective collaboration.



Instantaneous and responsive features to reduce mundane, repetitive tasks.

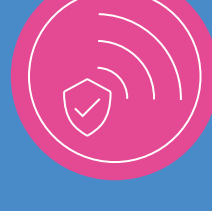


36%

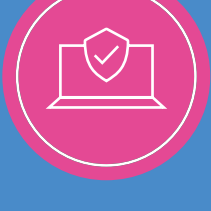
of organisations have increased or are planning to increase flexible working⁸

3. Improving IT Manageability

With flexible working style comes the challenges of managing multiple devices across locations. IT managers need reliable endpoint devices that offer them more control for easy management.



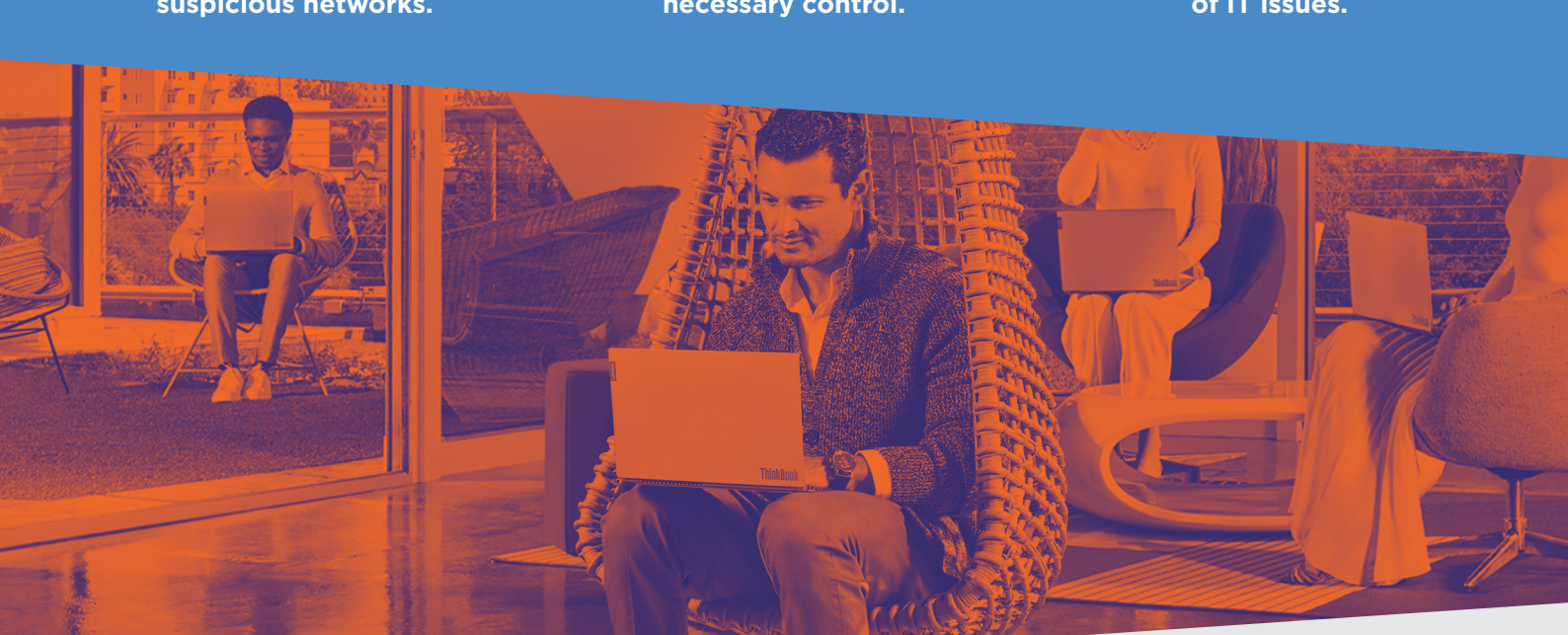
Devices with intelligent security that detect and warn users of suspicious networks.



Easy to deploy mobile device management solutions to ensure necessary control.



Business-grade services for prompt and effective resolution of IT issues.



Start Your Workplace Transformation with the Lenovo ThinkBook

Endpoint devices are the essence of workplace transformation. You need a modern device that gives you performance, security, and flexibility to keep you ahead of the curve.



ThinkBook

**BUILT FOR BUSINESS.
DESIGNED FOR YOU.**



www.thinkbook.com.au

1. <https://blog.capterra.com/the-top-15-surprising-productivity-statistics-for-2017/>
2. <http://www.dunnonline.com/blog/10-shocking-statistics-work-productivity/>
3. Forrester Data Global Business Technographics® Software Survey, 2017
4. <https://www.onr.com/blog>
5. <https://techaisle.com/blog/340-smb-productivity-improvement-finding-hard-numbers-in-soft-benefits>
6. http://www.productivitydelivered.com/ds/en/documents/files/1_Pillar%20%20-%20TLP%20-%20English%20-%20Workforce%20Experience.pdf
7. <https://www.flexjobs.com/blog/post/2018-annual-survey-finds-workers-more-productive-at-home/>
8. IDC AP Future of Work Survey 2018
*Available only on UMA models

© 2019 Lenovo. All rights reserved. Products are available while supplies last. Lenovo is not responsible for photographic or typographic errors. Lenovo, the Lenovo logo and ThinkBook are trademarks or registered trademarks of Lenovo. 3rd party product and service names may be trademarks of others. Intel, the Intel Logo, Intel Inside, Intel Core, and Core Inside are trademarks of Intel Corporation or its subsidiaries in the U.S. and/or other countries. Depending on factors such as the processing capability of peripheral devices, file attributes, system configuration and operating environments, the actual data transfer rate of USB connectors will vary and is typically slower than published standards (5Gbit/s for USB 3.1 Gen1; 10Gbit/s for USB 3.1 Gen2; 20Gbit/s for USB 3.2). Product features and images shown may vary by specific model. Check with stockists for details.